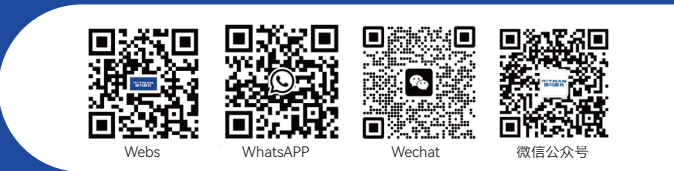




Xuzhou **RITMAN** Equipment Co., Ltd. is an intelligent equipment company (Short name "RITMAN Intelligent", English name "RITMAN"). RITMAN with the mission of "intelligent, digital, and trouble-free production", the company is a national high-tech enterprise and National-Level SRDI "Little Giant" Enterprise. Relying on strong R&D and production strength, the company focuses on the sales and service of laser cutting equipment. The main products include: laser plate cutting machine, laser tube cutting machine, large format customized laser cutting machine, laser plate & tube integrated machine, sheet coil laser cutting machine, 3D laser cutting machine, handheld laser welding machine, automated laser welding equipment, robot laser welding machine and other equipment. We are willing to work with our partners for mutual benefit and win-win situation!

徐州瑞马智能技术股份有限公司是一家智能装备企业（简称“瑞马智能”，英文名“RITMAN”）。公司以“工业生产智能化、数字化、无忧化”为使命，是国家级高新技术企业、国家级专精特新“小巨人”企业。公司依托强大的研发生产实力，专注于激光切割设备以及上下游设备的销售与服务。主要产品包括：激光切板机、激光切管机、大幅面定制型激光切割机、激光板管一体机、卷材激光切割机、三维激光切割机、手持激光焊机、自动化激光焊接设备、机器人激光焊接机等设备。愿与广大合作伙伴互利互惠，共创共赢！

NO:2024.04



认真 · 开放 · 勇气 · 责任
Seriousness Openness Courage Responsibility



RITMAN Laser has more than 100 R&D engineers. It has a technical R&D team composed of a doctoral team from Dalian University of Technology and a master's team from Southeast University, as well as perfect research laboratory facilities and equipment. RITMAN with strong R&D technical strength, the R&D Technology Center has obtained a total of 64 invention patents, 10 authorizations, 59 utility models, 28 soft publications, and 12 professional papers.

瑞马激光拥有研发技术工程师100余名，同时拥有包括大连理工大学博士生团队和东南大学硕士生团队组成的技术研发团队以及完善的科研实验设施设备。自公司成立以来，凭借强劲的研发技术实力加持，研发技术中心累计获得发明专利实审64项、授权10项，实用新型59项、软著28项、发表专业论文12篇。



100+ Technical Team
技术团队
Ph.D. 博士
Specialist 专家
Senior Engineer 高级工程师

200+
Invention patent 专利

Xuzhou RITMAN Equipment Co.,LTD

☎ 400-006-3106
✉ James@sinoritman.com
🌐 www.ritman-laser.com
📍 Chuangye Road 35# Xuzhou Economic Development Zone, Jiangsu, China

徐州瑞马智能技术股份有限公司

☎ 0516-83059893
🌐 http://www.ritmanlaser.com
📍 江苏徐州经济开发区创业路35号

3000-120000W

RM-LC **FC** Series

Exchange Platform Sheet Laser Cutting Machine
交换平台板材激光切割机

Exchange Platform Sheet Laser Cutting Machine

交换平台板材激光切割机



RM-LC FC						
Model 机型	RM-LC FC3015	RM-LC FC4020	RM-LC FC6020	RM-LC FC6025	RM-LC FC8025	RM-LC FC12025
Power 功率	3000W-20000W	3000W-20000W	3000W-60000W	3000W-60000W	3000W-60000W	12000W-120000W
Processing format 加工幅面	3000mmx1500mm	4000mmx2000mm	6000mmx2000mm	6000mmx2500mm	8000mmx2500mm	12000mmx2500mm
Acceleration 加速度	1.5G	1.5G	1.5G	1.5G	1.5G	1.5G
Max. No-load Speed 最大空载速度	120m/min	120m/min	120m/min	120m/min	120m/min	120m/min
Positioning Accuracy 定位精度	±0.05mm	±0.05mm	±0.05mm	±0.05mm	±0.05mm	±0.05mm
Repositioning Accuracy 重定位精度	±0.03mm	±0.03mm	±0.03mm	±0.03mm	±0.03mm	±0.03mm

Product Advantages

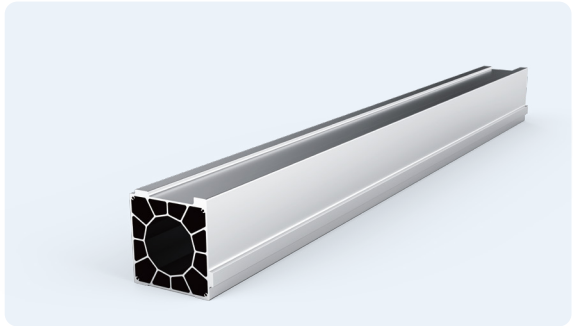
产品优势



High Strength Mortise And Tenon Welded Bed Body

高强度卯榫焊接床身

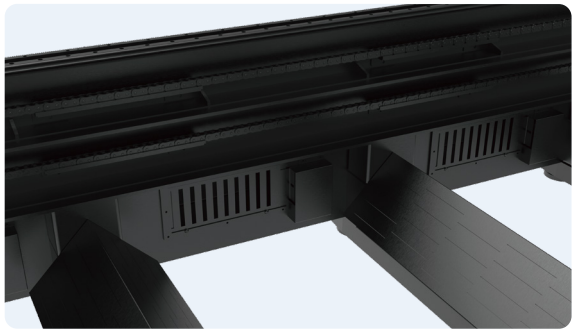
Welding of mortise and tenon structure, secondary aging residual stress treatment, and precision gantry milling machine ultra precision machining have increased rigidity, strength, and stability by more than 30% year-on-year.
卯榫结构焊接，加以二次时效残余应力处理及精密龙门铣床超精加工，刚性、强度、稳定性同比提升30%以上。



Aviation Extruded Aluminum Crossbeam

航空铝横梁

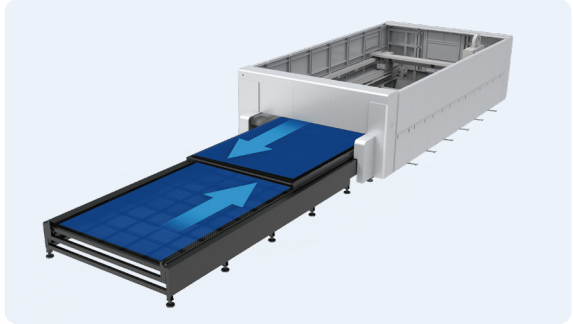
Adopting aviation extruded aluminum crossbeam, it is lightweight and has high-performance dynamic performance, improving efficient motion speed and acceleration.
采用航空挤压铝横梁，重量轻，具有高性能的动态性能，提升了高效的运动速度及加速度。



Partition Dust Removal

分区除尘

Ultra large diameter air duct design, independent control, partition dust removal, and improved smoke and heat removal efficiency.
超大口径风道设计，独立控制，分区除尘，提高排烟除热效果。



Exchange Workbench

交换工作台

The exchange workbench mainly consists of a main frame and a supporting material rack. Adopting folding welding and then overall welding to form, it has good rigidity, high strength, and large load-bearing capacity.
交换工作台主要由主体框架和支撑料架组成。采用折叠焊接后再整体焊接成型，刚性好，强度高，承载量大。

CUTTING SAMPLES

切割样品



APPLICATION FIELDS

应用领域

