



Xuzhou **RITMAN** Equipment Co., Ltd. is an intelligent equipment company (Short name "RITMAN Intelligent", English name "RITMAN"). RITMAN with the mission of "intelligent, digital, and trouble-free production", the company is a national high-tech enterprise and National-Level SRDI "Little Giant" Enterprise. Relying on strong R&D and production strength, the company focuses on the sales and service of laser cutting equipment. The main products include: laser plate cutting machine, laser tube cutting machine, large format customized laser cutting machine, laser plate & tube integrated machine, sheet coil laser cutting machine, 3D laser cutting machine, handheld laser welding machine, automated laser welding equipment, robot laser welding machine and other equipment. We are willing to work with our partners for mutual benefit and win-win situation!


徐州瑞马智能技术股份有限公司是一家智能装备企业（简称“瑞马智能”，英文名“RITMAN”）。公司以“工业生产智能化、数字化、无忧化”为使命，是国家级高新技术企业、国家级专精特新“小巨人”企业。公司依托强大的研发生产实力，专注于激光切割设备以及上下游设备的销售与服务。主要产品包括：激光切板机、激光切管机、大幅面定制型激光切割机、激光板管一体机、卷材激光切割机、三维激光切割机、手持激光焊接机、自动化激光焊接设备、机器人激光焊接机等设备。愿与广大合作伙伴互利互惠，共创共赢！




NO:2024.04


Webs


WhatsApp


Wechat


微信公众号



认真 · 开放 · 勇气 · 责任
Earnest Openness Courage Responsibility



RITMAN Laser has more than 100 R&D engineers. It has a technical R&D team composed of a doctoral team from Dalian University of Technology and a master's team from Southeast University, as well as perfect research laboratory facilities and equipment. RITMAN with strong R&D technical strength, the R&D Technology Center has obtained a total of 64 invention patents, 10 authorizations, 59 utility models, 28 soft publications, and 12 professional papers.

瑞马激光拥有研发技术工程师100余名，同时拥有包括大连理工大学博士生团队和东南大学硕士生团队组成的技术研发团队以及完善的科研实验设施设备。自公司成立以来，凭借强劲的研发技术实力加持，研发技术中心累计获得发明专利实审64项、授权10项，实用新型 59项、软著28项、发表专业论文12篇。



100+ Technical Team
技术团队
Ph.D. 博士 Specialist 专家 Senior Engineer 高级工程师

200+ Invention patent
专利

Xuzhou RITMAN Equipment Co.,LTD

- ☎ 400-006-3106
- ✉ James@sinoritman.com
- 🌐 www.ritmanlasers.com
- 📍 Chuangye Road 35# Xuzhou Economic Development Zone, Jiangsu, China

徐州瑞马智能技术股份有限公司

- ☎ 0516-83059893
- 🌐 http://www.ritmanlasers.com
- 📍 江苏徐州经济开发区创业路35号

RM- MS Series

Physical Scribing Machine
物理划刻机

Physical Scribing Machine

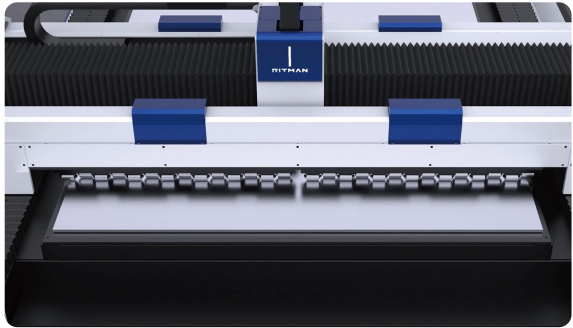
物理划刻机



RM-MS	
Model	13000mm×2600mm
Processing width (L×W)	±0.05mm
X,Y axis positioning accuracy	±0.03mm
Repeatable positioning accuracy of X,Y axis	70m/min
Maximum Acceleration	1G
Countertop load-bearing	10000kg
Overall dimensions	14500*3750*2150
Weights	~12000kg

Product Advantages

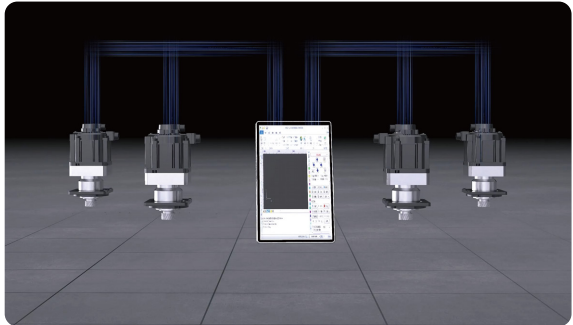
产品优势



High economic efficiency

经济效益高

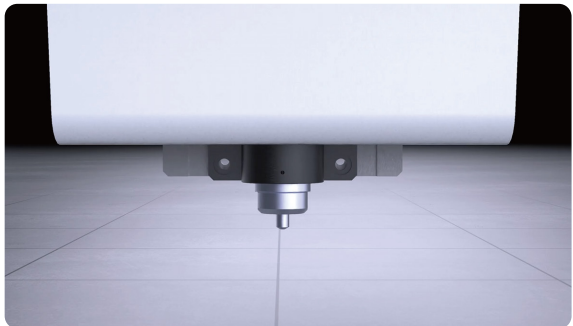
CNC scribing machine instead of laser marking and the use of embossing machine manual embossing steel seal can realize a significant increase in efficiency, the annual overall cost savings of about 90% or so. 数控划刻机替代激光打标和使用压号机手工压制钢印可实现效率大幅提升，每年综合成本节省约90%左右。



Precision Machinery Control System

精密机械控制系统

Low error rate, high repetitive positioning accuracy, multi-axis linkage control, support continuous mass production, high automation and high productivity. 误差率低，重复定位精度高，多轴联动控制，支持连续批量生产，自动化高，生产效率高。



Alloy Scribing Needles

合金划刻针

Adopting alloy scribing needle, high hardness, durable wear-resistant, not easy to damage. 采用合金划刻针，硬度高，持久耐磨，不易损坏。



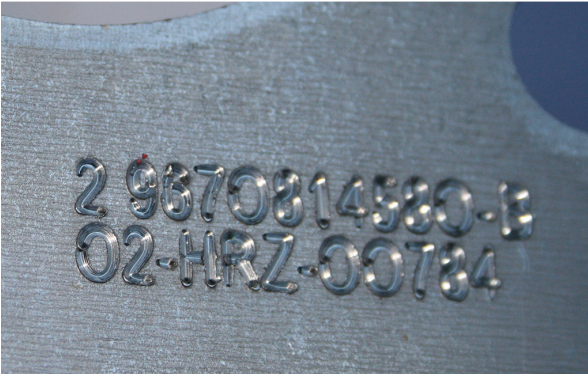
Controlled scratch depth

划刻深度可控

Equipped with proportional valve, automatic adjustment of air pressure, control the depth of scribing, to meet the needs of different industries, especially for the tower industry. 装配比例阀，自动调节气压，控制划刻深度，满足不同行业需求，特别适用铁塔行业。

ENGRAVING SAMPLES

划刻样品



APPLICATION FIELDS

应用领域

