



Xuzhou **RITMAN** Equipment Co., Ltd. is an intelligent equipment company (Short name "RITMAN Intelligent", English name "RITMAN"). RITMAN with the mission of "intelligent, digital, and trouble-free production", the company is a national high-tech enterprise and National-Level SRDI "Little Giant" Enterprise. Relying on strong R&D and production strength, the company focuses on the sales and service of laser cutting equipment. The main products include: laser plate cutting machine, laser tube cutting machine, large format customized laser cutting machine, laser plate & tube integrated machine, sheet coil laser cutting machine, 3D laser cutting machine, handheld laser welding machine, automated laser welding equipment, robot laser welding machine and other equipment. We are willing to work with our partners for mutual benefit and win-win situation!

徐州瑞马智能技术股份有限公司是一家智能装备企业（简称“瑞马智能”，英文名“RITMAN”）。公司以“工业生产智能化、数字化、无忧化”为使命，是国家级高新技术企业、国家级专精特新“小巨人”企业。公司依托强大的研发生产实力，专注于激光切割设备以及上下游设备的销售与服务。主要产品包括：激光切板机、激光切管机、大幅面定制型激光切割机、激光板管一体机、卷材激光切割机、三维激光切割机、手持激光焊机、自动化激光焊接设备、机器人激光焊接机等设备。愿与广大合作伙伴互利互惠，共创共赢！

NO:2025.09



认真 · 开放 · 勇气 · 责任
Earnest Openness Courage Responsibility



RITMAN Laser has more than 100 R&D engineers. It has a technical R&D team composed of a doctoral team from Dalian University of Technology and a master's team from Southeast University, as well as perfect research laboratory facilities and equipment. RITMAN with strong R&D technical strength, the R&D Technology Center has obtained a total of 64 invention patents, 10 authorizations, 59 utility models, 28 soft publications, and 12 professional papers.

瑞马激光拥有研发技术工程师100余名，同时拥有包括大连理工大学博士生团队和东南大学硕士生团队组成的技术研发团队以及完善的科研实验设施设备。自公司成立以来，凭借强劲的研发技术实力加持，研发技术中心累计获得发明专利实审64项、授权10项，实用新型59项、软著28项、发表专业论文12篇。



100+ Technical Team
技术团队
Ph.D. 博士
Specialist 专家
Senior Engineer 高级工程师

200+
Invention patent 专利

Xuzhou RITMAN Equipment Co.,LTD

☎ 400-006-3106
✉ alan@sinooritman.com
🌐 www.ritman-laser.com
📍 35# Chuangye Road Xuzhou Economic Development Zone, Jiangsu, China

徐州瑞马智能技术股份有限公司

☎ +86 13051198160
🌐 http://www.ritmanlaser.com
📍 江苏徐州经济开发区创业路35号

12000-30000W

RM-LC **GS/GG** Series

H-beam Laser Cutting Machine
H型钢激光切割机

H-beam Laser Cutting Machine

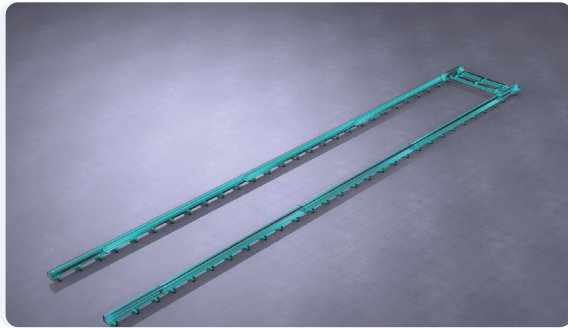
H型钢激光切割机



RM-LC GG (Gantry)		
Model 机型	RM-LC GG26030	RM-LC GG26040
Power 功率	12000W-30000W	12000W-30000W
Processing format 加工幅面	26000mm×3000mm	26000mm×4000mm
A, C-axis A/C轴	±90°	±90°
Positioning accuracy 定位精度	±0.08mm/m	±0.08mm/m
Repetitive positioning accuracy 重复定位精度	±0.05mm	±0.05mm
Cutting accuracy 切割精度	7000kg	7000kg
Maximum movement speed of X/Y axis X/Y轴的最大移动速度	70m/min	70m/min
Acceleration 加速度	0.5G	0.5G

Product Advantages

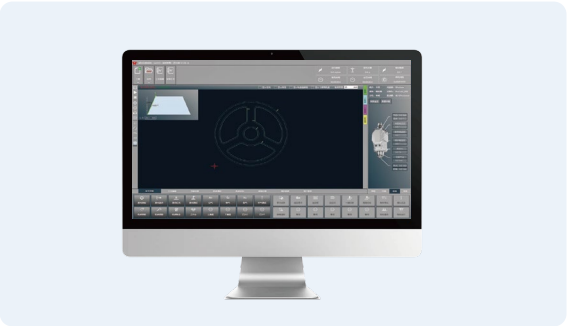
产品优势



Stable And Durable Structure

高精度 高效率

Machine tools typically employ heavy-duty welded structures that undergo annealing or stress-relief treatment to eliminate residual stresses. This provides high rigidity and resistance to vibration, preventing deformation during high-speed cutting operations. 机床常采用重型焊接结构，并经退火或时效处理消除应力，抗震刚性强，可防高速切割时变形。



Smart Nesting Programming

智能套料编程

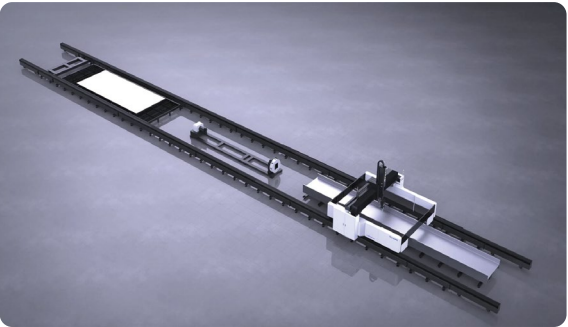
Professional nesting software seamlessly integrates with structural steel design software like Tekla, enabling intelligent layout and automatic drawing breakdown. This reduces programming time and minimizes scrap material output. 专业套料软件可与 Tekla 等钢结构设计软件高效衔接，实现智能排版，自动拆图，能缩短编程时间，减少废料产出。



Flexible Angle Cutting

灵活角度切割

Equipped with multi-axis linkage systems such as A and C axes, it supports complex cutting operations like 45° bevel cuts or 180° reciprocating cuts, meeting the demands of irregular and multi-angle processing for components like weld-through holes and variable-section H-beams. 配备 A、C 等多轴联动系统，支持如 45°坡口或 180°往返等复杂切割动作，满足过焊孔、变截面 H 型钢等异形、多角度加工要求。



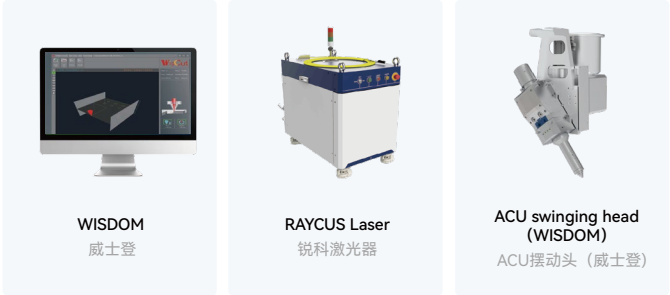
Multi-functional Composite Processing

多功能复合加工

Capable of performing one-stop processing for H-beam cutting, notching, beveling, marking, and engraving, it often accommodates cutting of other profiles such as channel steel and I-beams. Certain models support straight or bevel cutting of plates and pipes, replacing multiple traditional machines to save space and costs. 可实现 H 型钢截断、锁口、坡口、划线、打标等一站式加工，还能兼容槽钢、工字钢等其他型材的切割，部分机型支持板材、管材直切或坡口切割，取代多台传统设备，节省场地与成本。

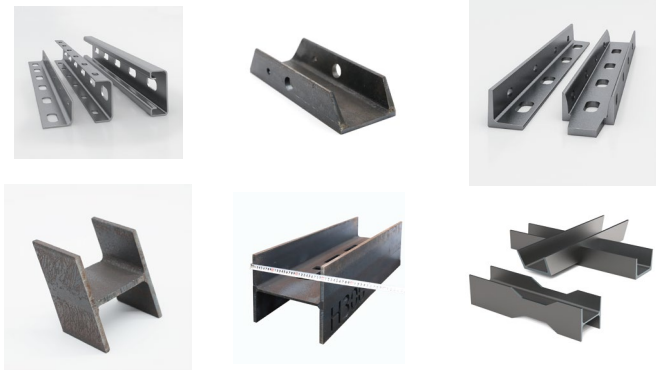
MAIN COMPONENTS

主要部件



CUTTING SAMPLES

切割样品



APPLICATION FIELDS

应用领域

